

NOTICE TO LOCAL BOATERS

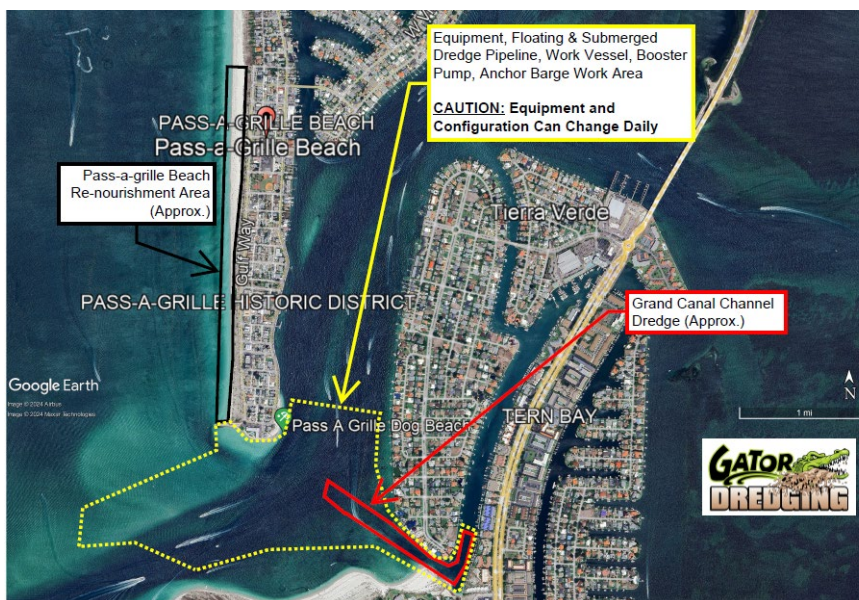
Date of Notice: 04-18-2024

Effective End Date: 10-31-2024

CHANNEL DREDGING TO BE CONDUCTED WITHIN GRAND CANAL IN TIERRA VERDE and BEACH RE-NOURISHMENT ON PASS-A-GRILLE BEACH

Dredging Commence Date: May 13, 2024
Dredging Completion Date: October 31, 2024 (anticipated)
Hours of Operation: 30 minutes after sunrise until 30 minutes before sunset in May 2024 Dredging will become 24/7 operation in early June until October 2024
Days of Operation: Monday through Sunday
Name of Dredge Vessel: JESSIE MARIE II
VHF Channels Monitored: Channels 13 & 16
Land Contact: Phillip White (Project Superintendent) Cell: (252) 334-9701
Secondary Land Contact: Zach Wiand (Project QC Manager) Cell: (727) 385-7727

Mariners are urged to use extreme caution in the area, transit at their slowest safe speed to minimize wake, and proceed with caution after passing arrangements have been made. Floating and submerged high density polyethylene (HDPE) pipeline associated with the hydraulic dredging operations of the channels will be utilized. Pipeline, work vessels, dredge barge, booster pump barge(s) and buoys will be visibly lighted and marked according to Coast Guard regulations and will be in the area until all work is complete and can change configuration daily. Vessels and/or equipment will be in multiple locations at the same time. PLEASE SEE MAP FOR DETAILS ON WHERE THIS EQUIPMENT CAN BE LOCATE.



Learn more about the project here:



SCAN ME



NOTICE TO LOCAL BOATERS

Date of Notice: 04-18-2024

Effective End Date: 10-31-2024

CHANNEL DREDGING TO BE CONDUCTED WITHIN GRAND CANAL IN TIERRA VERDE and BEACH RE-NOURISHMENT ON PASS-A-GRILLE BEACH

Dredging Commence Date: May 13, 2024
Dredging Completion Date: October 31, 2024 (anticipated)
Hours of Operation: 30 minutes after sunrise until 30 minutes before sunset in
May 2024 Dredging will become 24/7 operation in early June until
October 2024
Days of Operation: Monday through Sunday
Name of Dredge Vessel: JESSIE MARIE II
VHF Channels Monitored: Channels 13 & 16
Land Contact: Phillip White (Project Superintendent) Cell: (252) 334-9701
Secondary Land Contact: Zach Wiand (Project QC Manager) Cell: (727) 385-7727

Mariners are urged to use extreme caution in the area, transit at their slowest safe speed to minimize wake, and proceed with caution after passing arrangements have been made. Floating and submerged high density polyethylene (HDPE) pipeline associated with the hydraulic dredging operations of the channels will be utilized. Pipeline, work vessels, dredge barge, booster pump barge(s) and buoys will be visibly lighted and marked according to Coast Guard regulations and will be in the area until all work is complete and can change configuration daily. Vessels and/or equipment will be in multiple locations at the same time. PLEASE SEE MAP FOR DETAILS ON WHERE THIS EQUIPMENT CAN BE LOCATE.

Learn more about the project here:



SCAN ME

PASS-A-GRILLE BEACH
Pass-a-Grille Beach

Pass-a-grille Beach
Re-nourishment Area
(Approx.)

PASS-A-GRILLE HISTORIC DISTRICT

Pass A Grille Dog Beach

Equipment, Floating & Submerged
Dredge Pipeline, Work Vessel, Booster
Pump, Anchor Barge Work Area

CAUTION: Equipment and
Configuration Can Change Daily

Tierra Verde

Grand Canal Channel
Dredge (Approx.)

TERN BAY

Google Earth
© 2024 Airbus
© 2024 Maxar Technologies

